

Video Wall Controller

VK-THC Series



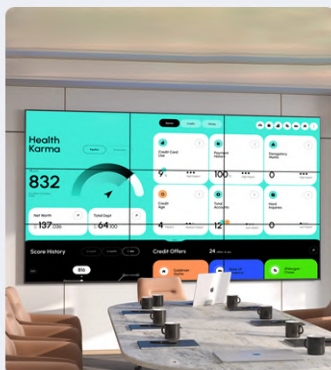
INTRODUCTION

VK-THC series video wall processor is an ultra-high-definition video image processing product. With powerful FPGA + embedded architecture design, it's able to provide customer with rich personalized function customization such as remote control, embedded audio switching, preset seamless switching, 9 layers per screen, 4 groups video wall management, scrolling text.

VK-THC series of scalable video wall processing systems is widely used for small and medium control room, monitor room, corporate meeting room and exhibition hall.

FEATURES

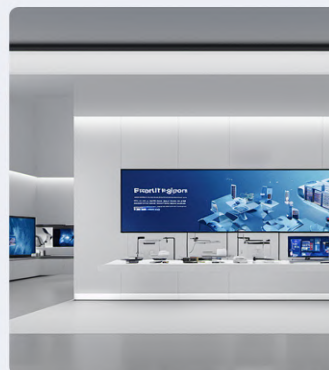
- Support up to 8in8out or 4in12out with 1920x1080@60hz HDMI embedded Audio in, 3.5mm audio output.
- Support LED/LCD display, each output supports 9 layers and up to 4 Groups management.
- Support splicing, roaming, zoom in & out, PIP, overlay, scrolling text and wallpaper.
- Support multiple control method such as windows, web, android, iOS and remote.
- Industrial FPGA architecture design and 7*24 non-stop operation, 3 years warranty.
- Support seamless switching and up to 256 presets management.
- Support multi-user management and online upgrade of the device through the upgrade tool.



Meeting Room



Control Room



Experience Room

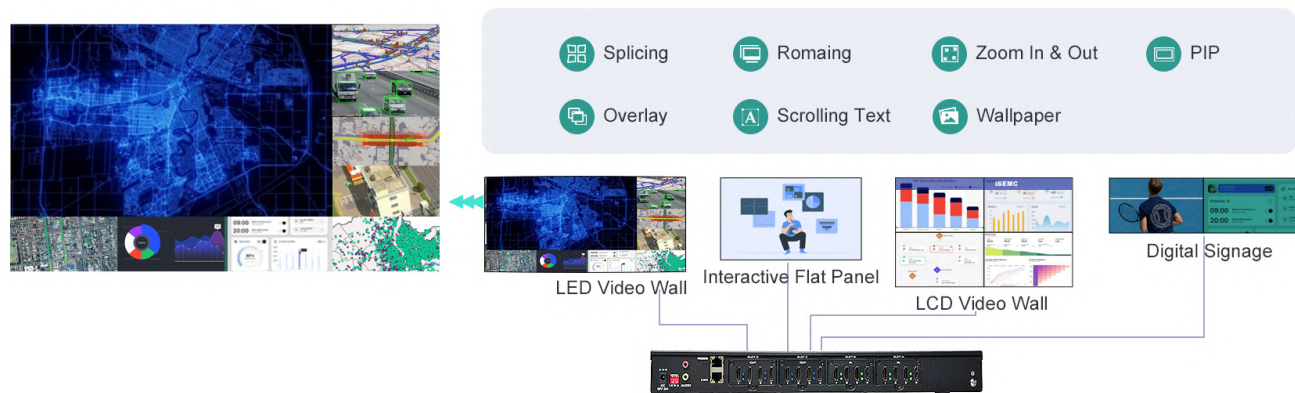


Monitoring Room

VK-THC Series

Signal Management

Each output supports 9 layers and up to 4 Groups management;



Remote Control

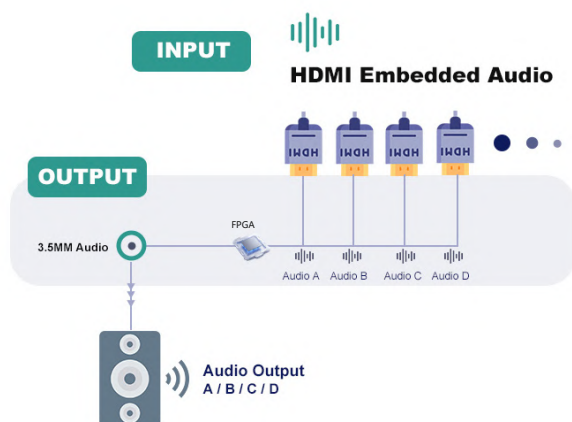
Remote control functionality allows operators to effortlessly switch between display scenes, choose corresponding video sources, and toggle the screen and sound on or off.

This capability significantly enhances convenience by enabling pre-set configurations that can be operated without a computer.



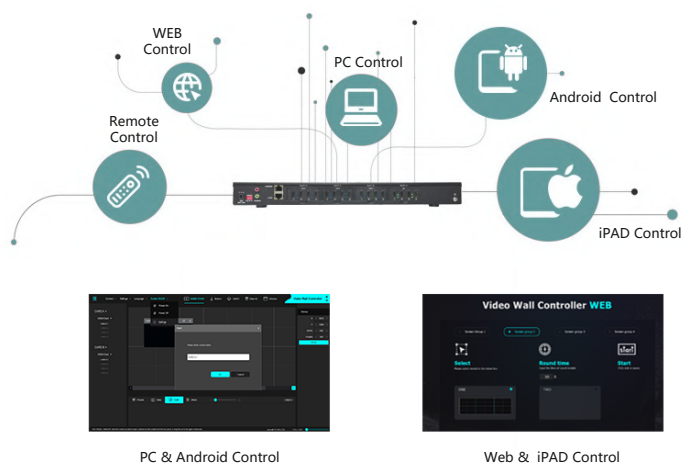
Audio Switch

Built-in FPGA audio de-embedding and switching function, which can separate and switch any HDMI audio channel to the 3.5mm audio output interface.

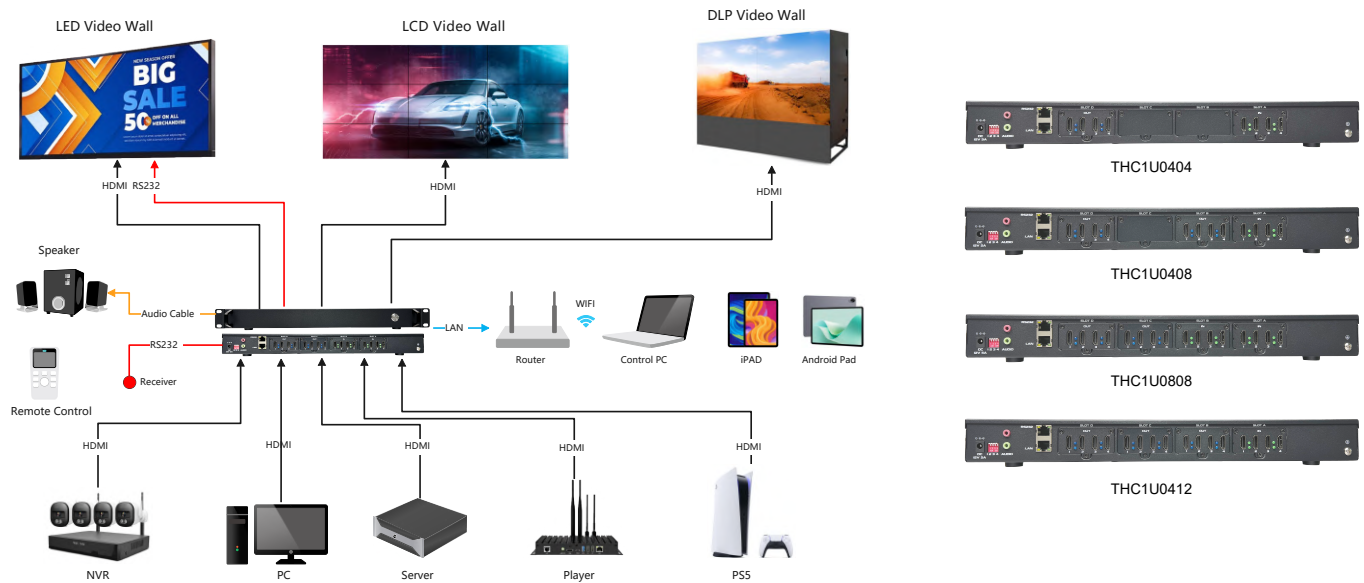


Multiple Control

Support computer software and web page control, remote control, custom installed Android software control. iPad WEB terminal switches planning scenes.



DIAGRAM



SPECIFICATIONS

VK-THC Series				
Model	THC1U0404	THC1U0408	THC1U0808	THC1U0412
Input Port	4	4	8	4
Output Port	4	8	8	12
Max Windows / One Screen	9			
Size (MM)	440*280*44.45			
Weight	3KG			
Power Consumption	30W			
Scrolling Text	Support			
Wallpaper	Support			
Input Hdmi Signal Card	HDMI1.4, Support 1920*1080P@60/50、1920*1080P@30/25、720P60/50、1024*768			
Output Hdmi Signal Card	HDMI1.4 , Support1920*1080P@60 ,Support Custom Resolution			
RJ45 Network Port	Quantity1,10/100M Adaptive, Supporting Other Devices In The LAN To Remotely Control The Processor			
RS232 Serial Port	Quantity1,Supports Access To The Large Screen And Central Control			
Audio Port	Quantity1,Support Whole-Machine Audio De-Embedding Output			
Infrared Remote Control Interface	Quantity1,Support Receiving Infrared Commands			
Power Supply	DC 12V/5A			
Operating Temperature	0°C~50°C			
Working Humidity	10% ~ 90% No Condensation			